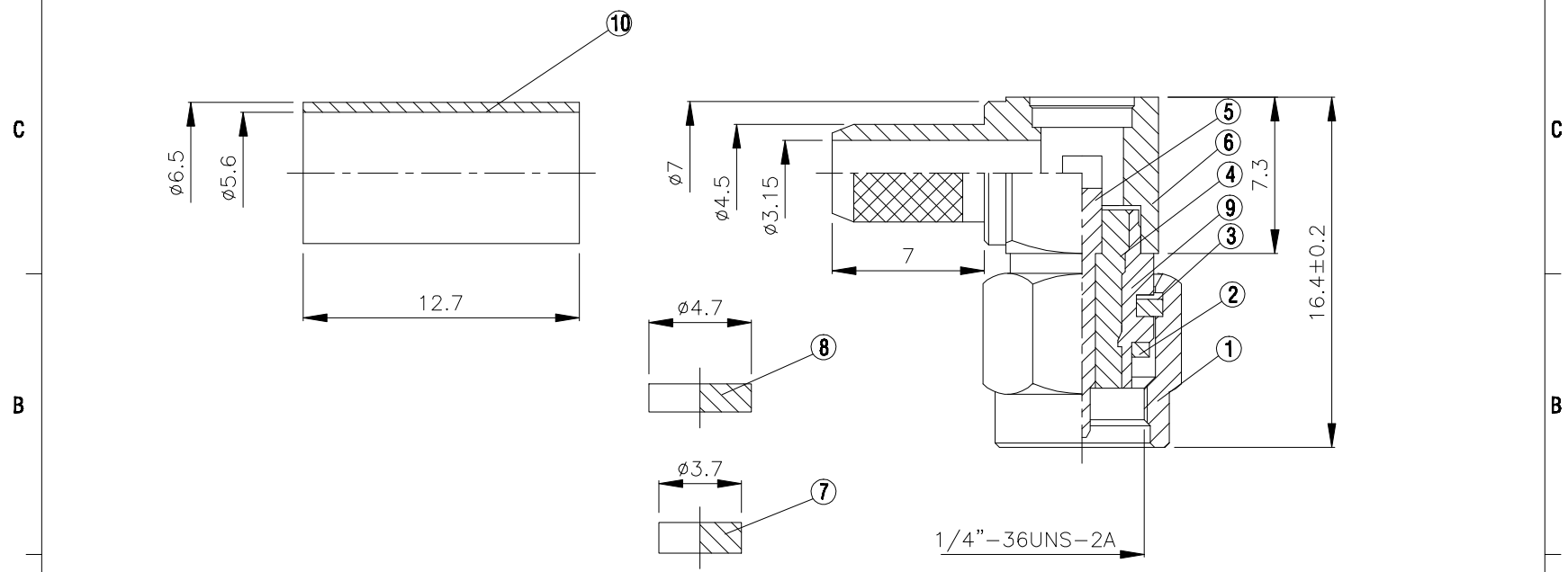
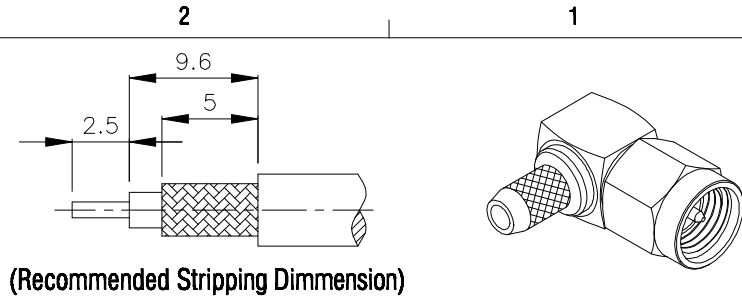


| NO | DESCRIPTION | MATERIAL | Q'TY | FINISH | REMARK |
|----|-------------|-----------|------|--------|-------------|
| 1 | SHELL | BRASS | 1 | GOLD | B-SMA0043-G |
| 2 | GASKET | SI RUBBER | 1 | GOLD | RU-0008 |
| 3 | WASHER | PH.BRONZE | 1 | GOLD | W-0012 |
| 4 | INSULATION | TEFLON | 1 | TEFLON | I-0138T |
| 5 | PIN | BE CU | 1 | GOLD | P-SMA0065-G |
| 6 | BODY | BRASS | 1 | GOLD | B-SMA0140-G |
| 7 | INSULATION | TEFLON | 1 | TEFLON | I-0136T |
| 8 | WASHER | BRASS | 1 | GOLD | W-0023-G |
| 9 | BODY | BRASS | 1 | GOLD | B-SMA0154-G |
| 10 | RING | BRASS | 1 | GOLD | R-0007-G |



| | | | | | | | | | | |
|--|-------------------------------------|--|----------|------|------|----------|--------------------------------------|----------------|-------------|----------|
| | HUS-TSAN GROUP CO., LTD. | | DRAWN | MARY | DATE | 96.03.15 | DIMENSIONS ARE IN MILLIMETERS | | REVISION | |
| | P.O.BOX 40-76.TAINAN.TAIWAN,R.O.C. | | CHECKED | 蘇志欣 | DATE | 97.05.30 | UNLESS OTHERWISE SPECIFIED TOLERANCE | | DESCRIPTION | ENGINEER |
| | TITLE SMA MALE CRIMP FOR RG 58/U | | Q.A. | 蘇姿潔 | DATE | | 0.5-5=±0.2 | 120-315=±1 | | |
| | PART NO. SMA-02F-TGG | | APPROVAL | 徐燦霖 | DATE | | 5-30=±0.4 | 315-1000=±1.6 | | |
| | DRAWING NO. SMA 02F TGG | | REVISION | | DATE | | 30-120=±0.6 | 1000-2000=±2.4 | | |
| | | | | | | SCALE | 4:1 | SIZE | A | |