



# MSM Series

## MSM Series

### MSM Series

MMS series incorporates a "Snap On" latching action, which provides rapid and easy connections.

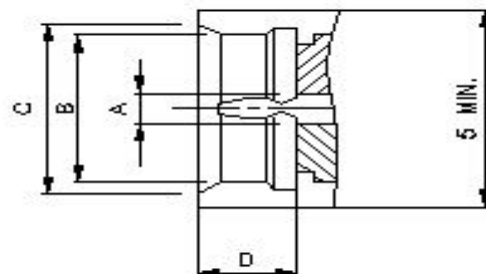
The impedance of this series is controlled at 50 ohms and can be operated up to 6 GHz.

Aside from PCB and flexible cable version, their small physical size is often designed into Surface Mount Technology (SMT) which allows automating connector assembly.

### Applications:

\*Video equipment\* telecommunication equipment \*

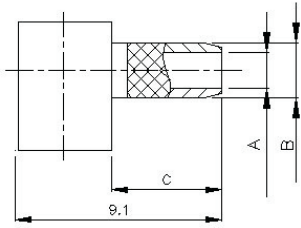
MSM Interfaced Dimensions:



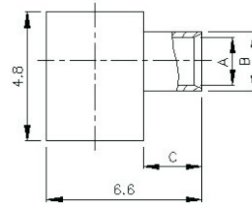
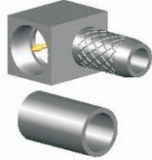
PLUG

MSM Series			
PLUG			
	Minimum		Maximum
A	0.38		0.41
B	3.3		3.35
C	3.6		3.8
D	1.7		1.75

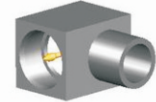
## MSM RIGHT ANGLE PLUG FOR CABLE TYPE



PART NUMBER:  
 MSM-01Z-TGN (75Ohm)  
 MSM-01LV5-TGN RD-316/U  
 MSM-01LV1-TGN RG-174,316/U  
 MSM-01M-TGN RG-178/U  
 MSM-01U-TGN 1.30 MM CABLE

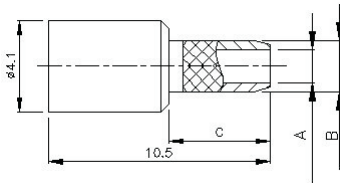


PART NUMBER:  
 MSM-01V1-TGG RG-405/U(.085")  
 MSM-01V3-TGG M17/151(.047")



## MSM STRAIGHT PLUG FOR CABLE TYPE

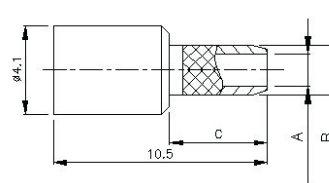
### CRIMP FOR FLEXIBLE CABLE



PART NUMBER:  
 MSM-02LV5-TGG RD-316/U  
 MSM-02LV1-TGG RG-174,316/U  
 MSM-02M-TGG RG-178/U



### SOLDER FOR SEMI-RIGID CABLE

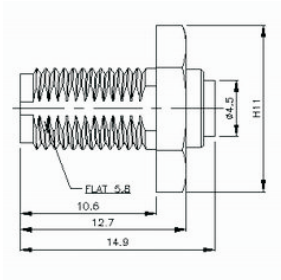


PART NUMBER:  
 MSM-02V1-TGG RG-405/U(.085")  
 MSM-02V3-TGG M17/151(.047")



## MSM PLUG - SMA JACK ADAPTOR

### BULKHEAD



PART NUMBER:  
 MSM-03-TGG

