



MCCD Series

MC-CARD Series

MC-CARD series is supplied with a snap on interface, which provides a quick connection and disconnection. It is a micro-miniature coaxial connector. The MC-CARD connectors can be operated up to 8GHz, and its impedance is controlled at 50 ohms. This series is suitable for the standard ranges of flexible & semi-rigid cables, and it's also available as a surface mounted version.

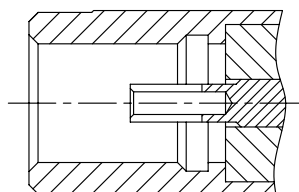
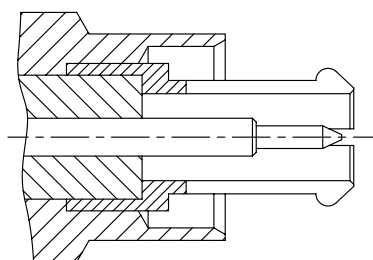
Applications:

*wireless LANs *PCMCIA cards *GSM *PMR/TETRA

Interface dimensions conformable to the Standards:

International: IEC 286-3

MCCD Interface Dimensions:



PLUG

JACK

MCCD Series					
PLUG			JACK		
	Minimum	Maximum		Minimum	Maximum
A	0.00<.000>	0.51<.020>		0.53<.021>	0.89<.035>
B	0.63<.002>	0.74<.029>		0.356<.014>	0.381<.150>
C	0.05<.002>	0.15<.006>			
D	0.356<.014>	0.381<.150>			

*Millimeters(Inches)



Materials :

Connector part	Material	Finish
Bodies	Brass	Nickel or Gold
Center Contact	Male: Brass Female: Beryllium copper	Gold
Insulator	Teflon	N/A
Crimp ferrule	Annealed copper	Nickel or Gold

Electrical :

Electrical Data	Detail		
Impedance	50 ohm		
Frequency range	DC-8 GHz		
Working voltage	170 V rms		
Insulation resistance	5000 milliohms		
Dielectric withstanding voltage	RG178/U → 750 volts rms min. at sea level RG316, 405 → 1,000 volts rms min. at sea level		
Contact resistance	Center contact: <1.5 milliohms Outer contact: <0.2 milliohms		
VSWR: f (GHz)		Straight	Right angle
	RG178/U	1.3+0.04f	1.45+0.06f
	RG316/U, 405	1.25+0.04f	1.35+0.04f
Insertion loss	0.3dB max. (straight)		
	0.6dB max. (right angle)		

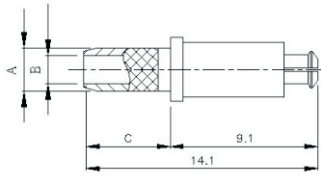
Mechanical :

Mechanical Data	Detail
Engagement force	2.3 lbs max.
Disengagement force	2.3 lbs max.
Connector durability	500 cycles min.
Cable retention force	RG178/U → 10 lbs
	RG316/U → 20 lbs
	RG405 → 30 lbs

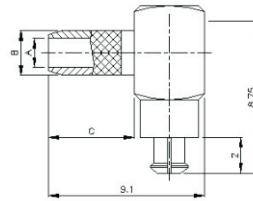
Environmental :

Environmental Data	Detail
Corrosion (Salt spray)	MIL-STD-202 METHOD 101 CONDITION B
Thermal shock	MIL-STD-202 METHOD 107 CONDITION B
Vibration	MIL-STD-202 METHOD 204 CONDITION B
Mechanical shock	MIL-STD-202 METHOD 213 CONDITION B

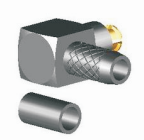
MCCD PLUG FOR FLEXIBLE CABLE



PART NUMBER:
 MCCD-01LV5-TGG RD-316/U
 MCCD-01LV1-TGG RG-174,316/U
 MCCD-01M-TGG RG-178/U

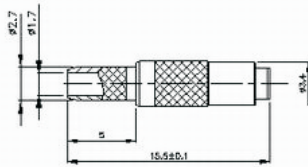


PART NUMBER:
 MCCD-03LV5-TGG RD-316/U
 MCCD-03LV1-TGG RG-174,316/U
 MCCD-03M-TGG RG-178/U



MCCD STRAIGHT JACK FOR CABLE TYPE

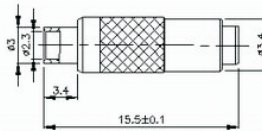
CRIMP FOR FLEXIBLE CABLE



PART NUMBER:
 MCCD-02LV5-TGG RD-316/U
 MCCD-02LV1-TGG RG-174,316/U
 MCCD-02M-TGG RG-178/U



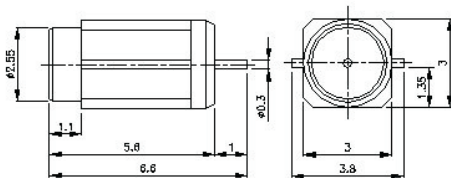
SOLDER FOR SEMI-RIGID CABLE



PART NUMBER:
 MMCX-02V1-TGG RG-405/U(.085")
 MMCX-02V3-TGG M17/151(.047")



MCCD JACK EDGE MOUNT



PART NUMBER:
 MCCD-06-TGG

